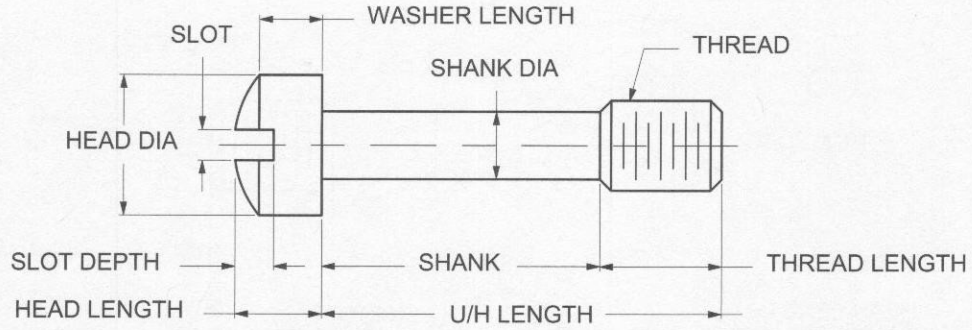


METRIC CAPTIVE PANEL SCREW TYPE 4



ORDERING CODE	XX MATERIAL	XXXX BASIC PART	XX FINISH
CODE	FINISH		
00	Plain — None		
01	Passivate MIL-F-14072-E300		
61	Nickel QQ-N-290 CL 1, Type VI KC		

MATERIAL	CODE
BRASS	BR
STAINLESS STEEL	SS
STEEL	ST

Additional Finishes Available

BASIC PART NUMBER	THREAD	HEAD DIA ±0.2	HEAD LENGTH +0.0 -0.4	UNDER HEAD LENGTH ±0.5	THREAD LENGTH ±0.3	SHANK DIA ±0.15	SHANK LENGTH ±0.3	WASHER LENGTH +0.0 -0.3	SLOT WIDTH +0.0 -0.3	SLOT DEPTH +0.0 -0.4
5783	M3X0.5	4.3	2.7	6.5	4.8	2	1.7	2	1	1.2
5784	M3X0.5	4.3	2.7	8	4.8	2	3.2	2	1	1.2
5785	M3X0.5	4.3	2.7	9.5	4.8	2	4.7	2	1	1.2
5786	M3X0.5	4.3	2.7	11	4.8	2	6.2	2	1	1.2
5787	M3X0.5	4.3	2.7	13	4.8	2	8.2	2	1	1.2
5788	M3X0.5	4.3	2.7	14.5	4.8	2	9.7	2	1	1.2
5789	M3X0.5	4.3	2.7	16	4.8	2	11.2	2	1	1.2
5790	M3X0.5	4.3	2.7	17.5	4.8	2	12.7	2	1	1.2
5791	M3X0.5	4.3	2.7	19	4.8	2	14.2	2	1	1.2
5792	M3X0.5	4.3	2.7	20.5	4.8	2	15.7	2	1	1.2
5793	M3X0.5	4.3	2.7	22	4.8	2	17.2	2	1	1.2
5794	M3X0.5	4.3	2.7	24	4.8	2	19.2	2	1	1.2
5795	M3X0.5	4.3	2.7	25.5	4.8	2	20.7	2	1	1.2
5796	M3.5X0.6	5.5	3.3	8	5.5	2.4	2.5	2.4	1.2	1.5
5797	M3.5X0.6	5.5	3.3	9.5	5.5	2.4	4	2.4	1.2	1.5
5798	M3.5X0.6	5.5	3.3	11	5.5	2.4	5.5	2.4	1.2	1.5
5799	M3.5X0.6	5.5	3.3	13	5.5	2.4	7.5	2.4	1.2	1.5
5800	M3.5X0.6	5.5	3.3	14.5	5.5	2.4	9	2.4	1.2	1.5
5801	M3.5X0.6	5.5	3.3	16	5.5	2.4	10.5	2.4	1.2	1.5
5802	M3.5X0.6	5.5	3.3	17.5	5.5	2.4	12	2.4	1.2	1.5
5803	M3.5X0.6	5.5	3.3	19	5.5	2.4	13.5	2.4	1.2	1.5
5804	M3.5X0.6	5.5	3.3	20.5	5.5	2.4	15	2.4	1.2	1.5
5805	M3.5X0.6	5.5	3.3	22	5.5	2.4	16.5	2.4	1.2	1.5
5806	M3.5X0.6	5.5	3.3	24	5.5	2.4	18.5	2.4	1.2	1.5
5807	M3.5X0.6	5.5	3.3	25.5	5.5	2.4	20	2.4	1.2	1.5



D9