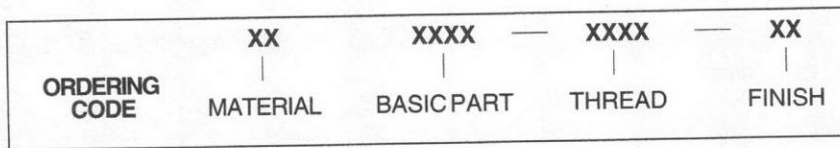
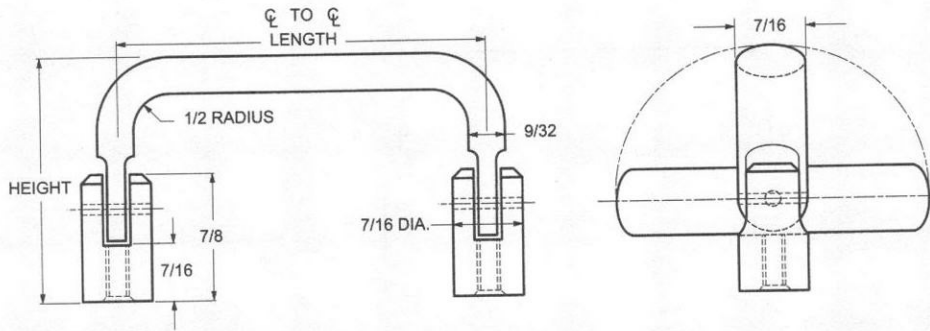


7/16 X 9/32 OVAL 180° INFINITE POSITION HANDLES

INTERNAL THREAD



MATERIAL	CODE
ALUMINUM	AL
BRASS	BR

THREAD SIZE	THREAD CODE
8-32	0832
10-32	1032

LENGTH ℄ TO ℄ ±1/32	LEG HEIGHT ±1/32	BASIC PART NUMBER
2"	2"	1901
3"		1902
4"		1903
5"		1904
6"		1905
2"	2.500	1906
3"		1907
4"		1908
5"		1909
2"	3"	1910
3"		1911
4"		1912

CODE	FINISH	CODE	FINISH
00	Plain — None	19	Bright Anodize — Black (High Luster)
01	Passivate MIL-F-14072-E300	21	Iridite MIL-C-5541 — Clear
02	Caustic Etch	22	Iridite MIL-C-5541 — Gold #14
12	Anodize MIL-A-8625C, Type II	34	Zinc QQ-Z-325, Type II, CL 3 — Clear Chromate
	Sulphuric Hot Water Seal — Clear	36	Zinc QQ-Z-325, Type II, CL 3 — Yellow Chromate
13	Anodize MIL-A-8625C, Type II	51	Black Oxide MIL-F-495 — Brass
	Sulphuric Dichromate Seal — Yellow Green	52	Black Oxide MIL-C-13924 — Stainless Steel
14	Anodize MIL-A-8625C — Black	61	Nickel QQ-N-290 CL 1, Type VI KC
15	Semi-Frost Anodize — Clear	62	Black Nickel
16	Semi-Frost Anodize — Black	71	Chrome QQ-C-320 CL 1, Type 1 — Bright
17	Satin Anodize — Clear	72	Chrome QQ-C-320 CL 1, Type 1 — Satin
18	Satin Anodize — Black		