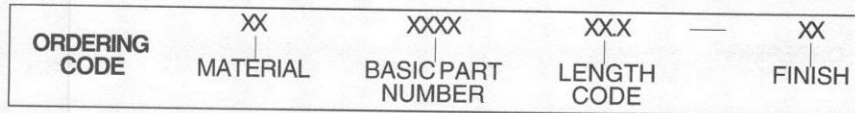
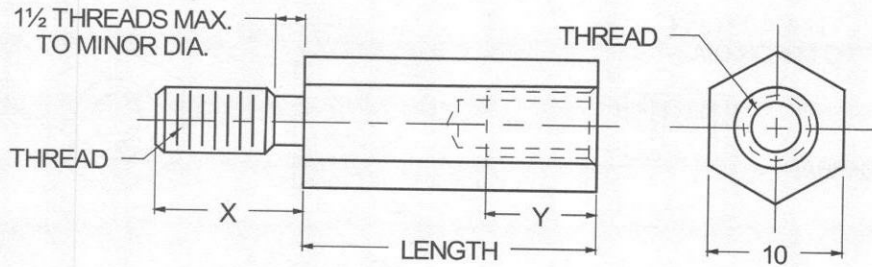




10mm HEX MALE-FEMALE STANDOFFS



MATERIAL	CODE
ALUMINUM	AL
BRASS	BR
STAINLESS STEEL	SS
STEEL	ST

NOTE: See Page B2 for additional materials and specifications.

THREAD SIZE	BASIC PART NO.
M3.5 x 0.6	5178
M4.0 x 0.7	5179
M5.0 x 0.8	5180

NOTE: Variance in sizes between male and female threads are available.

LENGTH mm	CODE	LENGTH mm	CODE
6	06.0	29	29.0
8	08.0	30	30.0
10	10.0	32	32.0
11	11.0	33	33.0
12	12.0	35	35.0
13	13.0	37	37.0
14	14.0	38	38.0
16	16.0	40	40.0
19	19.0	41	41.0
20	20.0	44	44.0
22	22.0	45	45.0
25	25.0	48	48.0
27	27.0	51	51.0

NOTE: For lengths not listed, contact Lyn-Tron, Inc.

THREAD SIZE	"X" LENGTH	"Y" MIN. FULL THD. DEPTH	MIN. BODY LENGTH
M3.5 x 0.6	6.35	9.53	12.7
M4.0 x 0.7	9.53	11.1	15.0
M5.0 x 0.8	9.53	12.7	16.5

- NOTES:
1. See page B2 for recommended "Y" thread depth where length is less than minimum body length shown on chart to left.
 2. Threads longer or shorter than "X" length are available.

CODE	FINISH	CODE	FINISH
00	Plain — None	33	Black Zinc
01	Passivate MIL-F-14072-E300	34*	Zinc QQ-Z-325, Type II, CL 3 — Clear Chromate
02	Caustic Etch	35	Zinc QQ-Z-325, Type I, CL 3
03	Bright Dip — Brass	36	Zinc QQ-Z-325, Type II, CL 3 — Yellow Chromate
11	Anodize MIL-A-8625C, Type I Chromic Hot Water Seal — Dark Grey	42	Electro Tin MIL-T-10727, Type I (Dull)
12	Anodize MIL-A-8625C, Type II Sulphuric Hot Water Seal — Clear	43	Electro Tin MIL-T-10727 C, Type I (Bright)
13	Anodize MIL-A-8625C, Type II Sulphuric Dichromate Seal — Yellow Green	44	Electro Tin (Solder) MIL-F-14072 M230/M222
14	Anodize MIL-A-8625C — Black	48	Copper / Nickel / Bright Tin
21	Iridite MIL-C-5541 — Clear	50	Black Oxide MIL-C-13924 — Steel
22*	Iridite MIL-C-5541 — Gold #14	51	Black Oxide MIL-F-495 — Brass
31	Cadmium QQ-P-416, CL 2 — Clear Chromate	52	Black Oxide MIL-C-13924 — Stainless Steel
32	Cadmium QQ-P-416, CL 2 — Color Chromate	61	Nickel QQ-N-290 CL 1, Type VI KC
		63	Ductile Nickel
		66	Electroless Nickel
		91	Silver QQ-S-365

*Standard finishes: Zinc (Clear Chromate) on brass material, Iridite (Gold #14) on aluminum material.