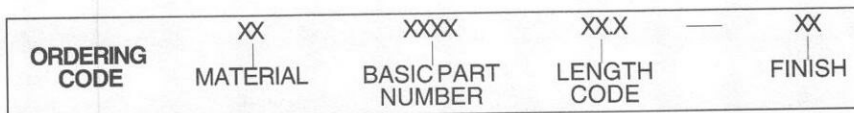
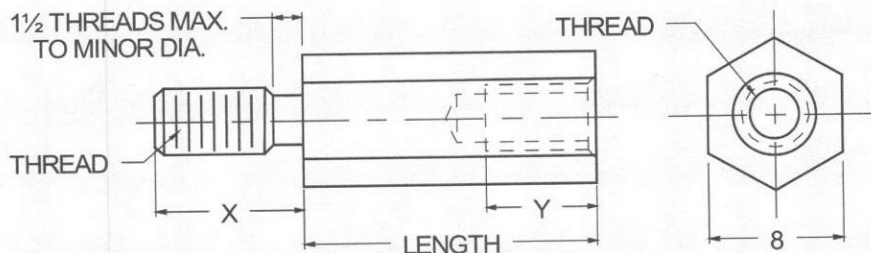


8mm HEX MALE-FEMALE STANDOFFS



| MATERIAL | CODE |
|-----------------|------|
| ALUMINUM | AL |
| BRASS | BR |
| STAINLESS STEEL | SS |
| STEEL | ST |

NOTE: See Page B2 for additional materials and specifications.

| THREADSIZE | BASIC PART NO. |
|------------|----------------|
| M3.5 x 0.6 | 5175 |
| M4.0 x 0.7 | 5176 |
| M5.0 x 0.8 | 5177 |

NOTE: Variance in sizes between male and female threads are available.

| LENGTH mm | CODE | LENGTH mm | CODE |
|-----------|------|-----------|------|
| 6 | 06.0 | 29 | 29.0 |
| 8 | 08.0 | 30 | 30.0 |
| 10 | 10.0 | 32 | 32.0 |
| 11 | 11.0 | 33 | 33.0 |
| 12 | 12.0 | 35 | 35.0 |
| 13 | 13.0 | 37 | 37.0 |
| 14 | 14.0 | 38 | 38.0 |
| 16 | 16.0 | 40 | 40.0 |
| 19 | 19.0 | 41 | 41.0 |
| 20 | 20.0 | 44 | 44.0 |
| 22 | 22.0 | 45 | 45.0 |
| 25 | 25.0 | 48 | 48.0 |
| 27 | 27.0 | 51 | 51.0 |

NOTE: For lengths not listed, contact Lyn-Tron, Inc.

| THREAD SIZE | "X" LENGTH | "Y" MIN. FULL THD. DEPTH | MIN. BODY LENGTH |
|-------------|------------|--------------------------|------------------|
| M3.5 x 0.6 | 6.35 | 9.53 | 12.7 |
| M4.0 x 0.7 | 9.53 | 11.1 | 15.0 |
| M5.0 x 0.8 | 9.53 | 12.7 | 16.5 |

- NOTES: 1. See page B2 for recommended "Y" thread depth where length is less than minimum body length shown on chart to left.
2. Threads longer or shorter than "X" length are available.

| CODE | FINISH | CODE | FINISH |
|------|--|------|--|
| 00 | Plain — None | 33 | Black Zinc |
| 01 | Passivate MIL-F-14072-E300 | 34* | Zinc QQ-Z-325, Type II, CL 3 — Clear Chromate |
| 02 | Caustic Etch | 35 | Zinc QQ-Z-325, Type I, CL 3 |
| 03 | Bright Dip — Brass | 36 | Zinc QQ-Z-325, Type II, CL 3 — Yellow Chromate |
| 11 | Anodize MIL-A-8625C, Type I Chromic Hot Water Seal — Dark Grey | 42 | Electro Tin MIL-T-10727, Type I (Dull) |
| 12 | Anodize MIL-A-8625C, Type II Sulphuric Hot Water Seal — Clear | 43 | Electro Tin MIL-T-10727 C, Type I (Bright) |
| 13 | Anodize MIL-A-8625C, Type II Sulphuric Dichromate Seal — Yellow Green | 44 | Electro Tin (Solder) MIL-F-14072 M230/M222 |
| 14 | Anodize MIL-A-8625C — Black | 48 | Copper / Nickel / Bright Tin |
| 21 | Iridite MIL-C-5541 — Clear | 50 | Black Oxide MIL-C-13924 — Steel |
| 22* | Iridite MIL-C-5541 — Gold #14 | 51 | Black Oxide MIL-F-495 — Brass |
| 31 | Cadmium QQ-P-416, CL 2 — Clear Chromate | 52 | Black Oxide MIL-C-13924 — Stainless Steel |
| 32 | Cadmium QQ-P-416, CL 2 — Color Chromate | 61 | Nickel QQ-N-290 CL 1, Type VI KC |
| | | 63 | Ductile Nickel |
| | | 66 | Electroless Nickel |
| | | 91 | Silver QQ-S-365 |

*Standard finishes: Zinc (Clear Chromate) on brass material, Iridite (Gold #14) on aluminum material.