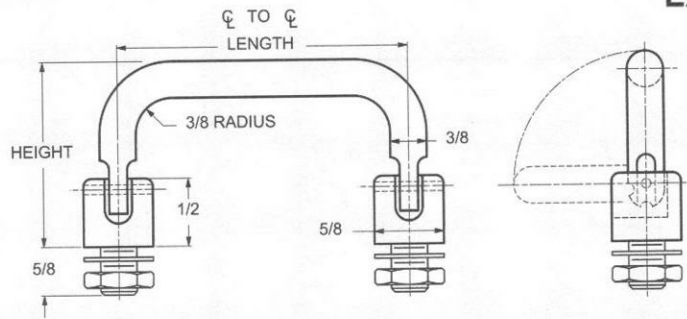




# 3/8 ROUND 90° TWO POSITION HANDLES

EXTERNAL THREAD



Nuts and washers are supplied

ORDERING CODE	XX	XXXX	XXXX	XX
	MATERIAL	BASIC PART	THREAD	FINISH

MATERIAL	CODE
ALUMINUM	AL
BRASS	BR
STAINLESS STEEL	SS
STEEL	ST

THREAD SIZE	THREAD CODE
5/16-24	3124
3/8-24	3724

LENGTH ℄ TO ℄ ±1/32	LEG HEIGHT ±1/32	BASIC PART NUMBER
3"		1723
3-1/2"		1724
4"		1725
4-1/4"	1.530	1726
4-1/2"		1727
5"		1728
6"		1729
4"		1730
4-1/4"		1731
4-1/2"		1732
5"	1.625	1733
6"		1734
7"		1735

LENGTH ℄ TO ℄ ±1/32	LEG HEIGHT ±1/32	BASIC PART NUMBER
4"		1736
4-1/4"		1737
4-1/2"	1.810	1738
5"		1739
6"		1740
7"		1741
4"		1742
4-1/4"		1743
4-1/2"	1.843	1744
5"		1745
6"		1746
3"		1747
3-1/2"		1748
4"		1749
4-1/4"	1.850	1750
4-1/2"		1751
5"		1752
6"		1753
4"		1754
4-1/4"	2.375	1755
4-1/2"		1756
5"		1757

CODE	FINISH	CODE	FINISH
00	Plain — None	19	Bright Anodize — Black (High Luster)
01	Passivate MIL-F-14072-E300	21	Iridite MIL-C-5541 — Clear
02	Caustic Etch	22	Iridite MIL-C-5541 — Gold #14
12	Anodize MIL-A-8625C, Type II Sulphuric Hot Water Seal — Clear	34	Zinc QQ-Z-325, Type II, CL 3 — Clear Chromate
13	Anodize MIL-A-8625C, Type II Sulphuric Dichromate Seal — Yellow Green	36	Zinc QQ-Z-325, Type II, CL 3 — Yellow Chromate
14	Anodize MIL-A-8625C — Black	51	Black Oxide MIL-F-495 — Brass
15	Semi-Frost Anodize — Clear	52	Black Oxide MIL-C-13924 — Stainless Steel
16	Semi-Frost Anodize — Black	61	Nickel QQ-N-290 CL 1, Type VI KC
17	Satin Anodize — Clear	62	Black Nickel
18	Satin Anodize — Black	71	Chrome QQ-C-320 CL 1, Type 1 — Bright
		72	Chrome QQ-C-320 CL 1, Type 1 — Satin