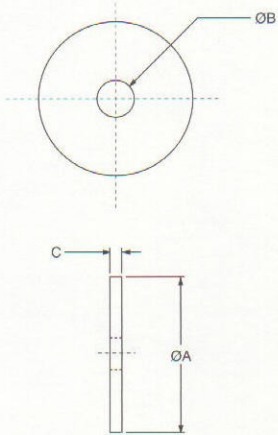


# 500 MOUNT SERIES: SNUBBING WASHER

## Dimensions



### 500 MOUNT SERIES SNUBBING WASHER

The use of snubbing washers is recommended to ensure proper static and dynamic loading of the isolator and retention of suspended equipment under severe shock environments.

Snubbing washers are ordered by separate part numbers as shown in the table below. The standard material is low-carbon steel and the standard finish is zinc plate. Other materials and finishes are available upon request.

Size	"A" Dia.	"B" Dia.	"C"	Part #
505	1.63	.322	.093	R18733-6
506	1.75	.385	.093	R18733-7
507	2.00	.450	.125	R18733-1
508	2.00	.510	.125	R18733-2
510	2.25	.635	.150	R18733-3
512	2.50	.780	.188	R18733-4
516	3.25	1.010	.250	R18733-5