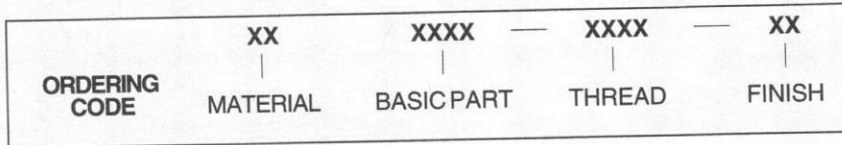
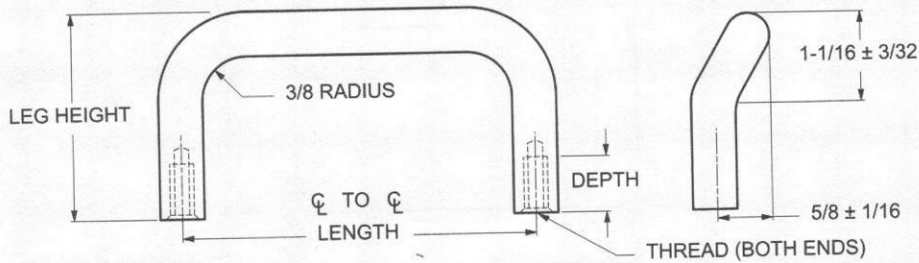




3/8 ROUND OFFSET HANDLES INTERNAL THREAD



MATERIAL	CODE
ALUMINUM	AL
BRASS	BR
STAINLESS STEEL	SS
STEEL	ST

THREAD SIZE	CODE	THREAD DEPTH
8-32	0832	5/16-7/16
10-32	1032	1/2-9/16

LENGTH ¢ TO ¢ ±1/32	LEG HEIGHT ±1/32	BASIC PART NUMBER
3"	1-3/4	1301
4"		1302
4-1/4		1303
4-1/2		1304
4-9/16		1305
5"		1306
5-1/2		1307
6"	1308	
3"	2"	1309
4"		1310
4-1/4		1311
4-1/2		1312
4-9/16		1313
5"		1314
5-1/2		1315
6"		1316

CODE	FINISH	CODE	FINISH
00	Plain — None	19	Bright Anodize — Black (High Luster)
01	Passivate MIL-F-14072-E300	21	Iridite MIL-C-5541 — Clear
02	Caustic Etch	22	Iridite MIL-C-5541 — Gold #14
12	Anodize MIL-A-8625C, Type II Sulphuric Hot Water Seal — Clear	34	Zinc QQ-Z-325, Type II, CL 3 — Clear Chromate
13	Anodize MIL-A-8625C, Type II Sulphuric Dichromate Seal — Yellow Green	36	Zinc QQ-Z-325, Type II, CL 3 — Yellow Chromate
14	Anodize MIL-A-8625C — Black	51	Black Oxide MIL-F-495 — Brass
15	Semi-Frost Anodize — Clear	52	Black Oxide MIL-C-13924 — Stainless Steel
16	Semi-Frost Anodize — Black	61	Nickel QQ-N-290 CL 1, Type VI KC
17	Satin Anodize — Clear	62	Black Nickel
18	Satin Anodize — Black	71	Chrome QQ-C-320 CL 1, Type 1 — Bright
		72	Chrome QQ-C-320 CL 1, Type 1 — Satin