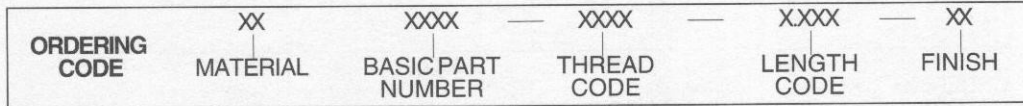
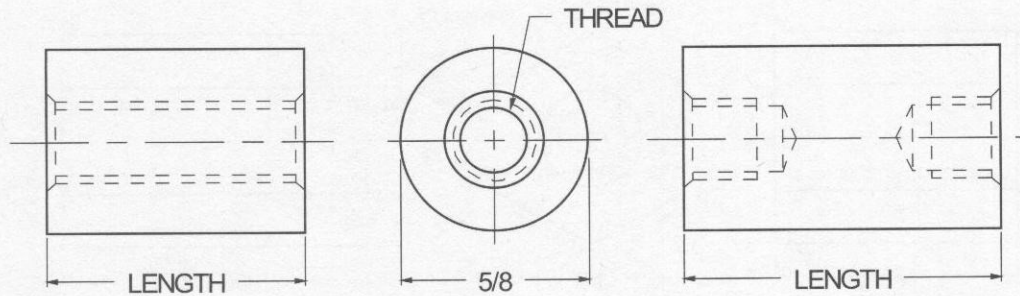




# 5/8 ROUND STANDOFFS



MATERIAL	CODE
ALUMINUM	AL
BRASS	BR
NYLON	NY
STAINLESS STEEL	SS
STEEL	ST

NOTE: See Page A4 for additional materials and specifications.

BASIC PART NO.
6946

THREAD SIZE	CODE
10-32	1032
12-24	1224
1/4-20	2520
5/16-18	3118
3/8-16	3716

NOTE: For thread depth chart see Page A4.

LENGTH	CODE	LENGTH	CODE	LENGTH	CODE
1/8	0.125	1 9/16	1.562	5"	5.000
3/16	0.187	1 5/8	1.625	5 1/4	5.250
1/4	0.250	1 11/16	1.687	5 1/2	5.500
5/16	0.312	1 3/4	1.750	5 3/4	5.750
3/8	0.375	1 13/16	1.812	6"	6.000
7/16	0.437	1 7/8	1.875	6 1/4	6.250
1/2	0.500	1 15/16	1.937	6 1/2	6.500
9/16	0.562	2"	2.000	6 3/4	6.750
5/8	0.625	2 1/8	2.125	7"	7.000
11/16	0.687	2 1/4	2.250	7 1/4	7.250
3/4	0.750	2 3/8	2.375	7 1/2	7.500
13/16	0.812	2 1/2	2.500	7 3/4	7.750
7/8	0.875	2 5/8	2.625	8"	8.000
15/16	0.937	2 3/4	2.750	8 1/4	8.250
1"	1.000	2 7/8	2.875	8 1/2	8.500
1 1/16	1.062	3"	3.000	8 3/4	8.750
1 1/8	1.125	3 1/4	3.250	9"	9.000
1 3/16	1.187	3 1/2	3.500	9 1/4	9.250
1 1/4	1.250	3 3/4	3.750	9 1/2	9.500
1 5/16	1.312	4"	4.000	9 3/4	9.750
1 3/8	1.375	4 1/4	4.250	10"	10.000
1 7/16	1.437	4 1/2	4.500		
1 1/2	1.500	4 3/4	4.750		

CODE	FINISH	CODE	FINISH
00	Plain — None	33	Black Zinc
01	Passivate MIL-F-14072-E300	34*	Zinc QQ-Z-325, Type II, CL 3 — Clear Chromate
02	Caustic Etch	35	Zinc QQ-Z-325, Type I, CL 3
03	Bright Dip — Brass	36	Zinc QQ-Z-325, Type II, CL 3 — Yellow Chromate
11	Anodize MIL-A-8625C, Type I Chromic Hot Water Seal — Dark Grey	42	Electro Tin MIL-T-10727, Type I (Dull)
12	Anodize MIL-A-8625C, Type II Sulphuric Hot Water Seal — Clear	43	Electro Tin MIL-T-10727 C, Type I (Bright)
13	Anodize MIL-A-8625C, Type II Sulphuric Dichromate Seal — Yellow Green	44	Electro Tin (Solder) MIL-F-14072 M230/M222
14	Anodize MIL-A-8625C — Black	48	Copper / Nickel / Bright Tin
21	Iridite MIL-C-5541 — Clear	50	Black Oxide MIL-C-13924 — Steel
22*	Iridite MIL-C-5541 — Gold #14	51	Black Oxide MIL-F-495 — Brass
31	Cadmium QQ-P-416, CL 2 — Clear Chromate	52	Black Oxide MIL-C-13924 — Stainless Steel
32	Cadmium QQ-P-416, CL 2 — Color Chromate	61	Nickel QQ-N-290 CL 1, Type VI KC
		63	Ductile Nickel
		66	Electroless Nickel
		91	Silver QQ-S-365

\*Standard finishes: Zinc (Clear Chromate) on brass material, Iridite (Gold #14) on aluminum material.