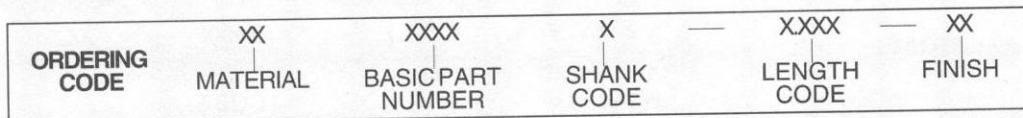
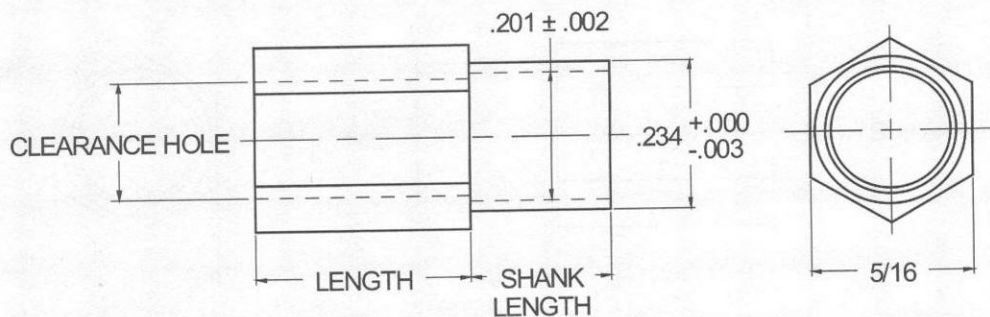


# 5/16 HEX SWAGE SPACERS .234 Shank Diameter



| MATERIAL        | CODE |
|-----------------|------|
| ALUMINUM        | AL   |
| BRASS           | BR   |
| STAINLESS STEEL | SS   |

NOTE: See Page A4 for additional materials and specifications.

| PANEL THICKNESS | SHANK LENGTH<br>± .003 | CODE |
|-----------------|------------------------|------|
| 1/32            | .075                   | A    |
| 1/16            | .105                   | B    |
| 3/32            | .135                   | C    |
| 1/8             | .165                   | D    |

NOTE: See Page A5 for additional shank lengths.

| PANEL HOLE SIZE |
|-----------------|
| .236 - .239     |

| SWAGE TOOLING |       |             |
|---------------|-------|-------------|
| PUNCH         | ANVIL | BODY LENGTH |
| 234           | 363-1 | 1/8 - 3/16  |
|               | 363-2 | 1/4 - 7/16  |
|               | 363-3 | 1/2 - 11/16 |
|               | 363-4 | 3/4 - 1"    |

| CLEARANCE HOLE<br>+.010 / -.000 | BASIC PART NO. |
|---------------------------------|----------------|
| .140                            | 6327           |
| .166                            | 6323           |
| .192                            | 6338           |

| LENGTH | CODE  |
|--------|-------|
| 1/8    | 0.125 |
| 3/16   | 0.187 |
| 1/4    | 0.250 |
| 5/16   | 0.312 |
| 3/8    | 0.375 |
| 7/16   | 0.437 |
| 1/2    | 0.500 |
| 9/16   | 0.562 |
| 5/8    | 0.625 |
| 11/16  | 0.687 |
| 3/4    | 0.750 |
| 13/16  | 0.812 |
| 7/8    | 0.875 |
| 15/16  | 0.937 |
| 1"     | 1.000 |

| CODE | FINISH                                   | CODE | FINISH                                         |
|------|------------------------------------------|------|------------------------------------------------|
| 00   | Plain — None                             | 33   | Black Zinc                                     |
| 01   | Passivate MIL-F-14072-E300               | 34*  | Zinc QQ-Z-325, Type II, CL 3 — Clear Chromate  |
| 02   | Caustic Etch                             | 35   | Zinc QQ-Z-325, Type I, CL 3                    |
| 03   | Bright Dip — Brass                       | 36   | Zinc QQ-Z-325, Type II, CL 3 — Yellow Chromate |
| 11   | Anodize MIL-A-8625C, Type I              | 42   | Electro Tin MIL-T-10727, Type I (Dull)         |
|      | Chromic Hot Water Seal — Dark Grey       | 43   | Electro Tin MIL-T-10727 C, Type I (Bright)     |
| 12   | Anodize MIL-A-8625C, Type II             | 44   | Electro Tin (Solder) MIL-F-14072 M230/M222     |
|      | Sulphuric Hot Water Seal — Clear         | 48   | Copper / Nickel / Bright Tin                   |
| 13   | Anodize MIL-A-8625C, Type II             | 50   | Black Oxide MIL-C-13924 — Steel                |
|      | Sulphuric Dichromate Seal — Yellow Green | 51   | Black Oxide MIL-F-495 — Brass                  |
| 14   | Anodize MIL-A-8625C — Black              | 52   | Black Oxide MIL-C-13924 — Stainless Steel      |
| 21   | Iridite MIL-C-5541 — Clear               | 61   | Nickel QQ-N-290 CL 1, Type VI KC               |
| 22*  | Iridite MIL-C-5541 — Gold #14            | 63   | Ductile Nickel                                 |
| 31   | Cadmium QQ-P-416, CL 2 — Clear Chromate  | 66   | Electroless Nickel                             |
| 32   | Cadmium QQ-P-416, CL 2 — Color Chromate  | 91   | Silver QQ-S-365                                |

\*Standard finishes: Zinc (Clear Chromate) on brass material, Iridite (Gold #14) on aluminum material.