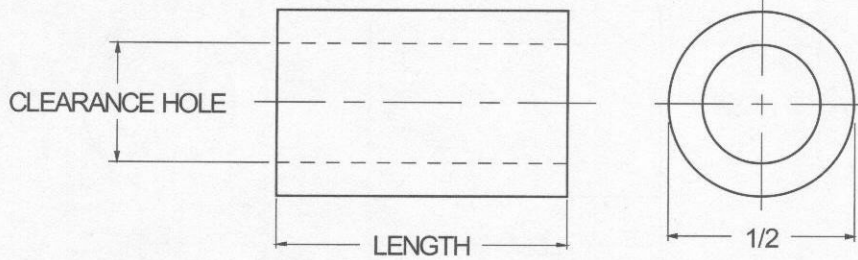




# 1/2 ROUND SPACERS



<b>ORDERING CODE</b>	<b>XX</b>	<b>XXXX</b>	<b>XX</b>	<b>X.XXX</b>	<b>XX</b>
	<b>MATERIAL</b>	<b>BASIC PART NUMBER</b>	<b>CLEARANCE CODE</b>	<b>LENGTH CODE</b>	<b>FINISH</b>

MATERIAL	CODE
ALUMINUM	<b>AL</b>
BRASS	<b>BR</b>
NYLON	<b>NY</b>
STAINLESS STEEL	<b>SS</b>
STEEL	<b>ST</b>

NOTE: See Page A4 for additional materials and specifications.

BASIC PART NO.
<b>6345</b>

CLEARANCE HOLE	CODE
+0.010 / -.000	
.166	<b>08</b>
.192	<b>10</b>
.218	<b>12</b>
.252	<b>25</b>

LENGTH	CODE	LENGTH	CODE
1/8	<b>0.125</b>	1"	<b>1.000</b>
3/16	<b>0.187</b>	1 1/16	<b>1.062</b>
1/4	<b>0.250</b>	1 1/8	<b>1.125</b>
5/16	<b>0.312</b>	1 3/16	<b>1.187</b>
3/8	<b>0.375</b>	1 1/4	<b>1.250</b>
7/16	<b>0.437</b>	1 5/16	<b>1.312</b>
1/2	<b>0.500</b>	1 3/8	<b>1.375</b>
9/16	<b>0.562</b>	1 7/16	<b>1.437</b>
5/8	<b>0.625</b>	1 1/2	<b>1.500</b>
11/16	<b>0.687</b>	1 9/16	<b>1.562</b>
3/4	<b>0.750</b>	1 5/8	<b>1.625</b>
13/16	<b>0.812</b>	1 11/16	<b>1.687</b>
7/8	<b>0.875</b>	1 3/4	<b>1.750</b>
15/16	<b>0.937</b>	1 13/16	<b>1.812</b>
		1 7/8	<b>1.875</b>
		1 15/16	<b>1.937</b>
		2"	<b>2.000</b>

NOTE: For lengths not listed, contact Lyn-Tron, Inc.

CODE	FINISH	CODE	FINISH
<b>00</b>	Plain — None	<b>33</b>	Black Zinc
<b>01</b>	Passivate MIL-F-14072-E300	<b>34*</b>	Zinc QQ-Z-325, Type II, CL 3 — Clear Chromate
<b>02</b>	Caustic Etch	<b>35</b>	Zinc QQ-Z-325, Type I, CL 3
<b>03</b>	Bright Dip — Brass	<b>36</b>	Zinc QQ-Z-325, Type II, CL 3 — Yellow Chromate
<b>11</b>	Anodize MIL-A-8625C, Type I Chromic Hot Water Seal — Dark Grey	<b>42</b>	Electro Tin MIL-T-10727, Type I (Dull)
<b>12</b>	Anodize MIL-A-8625C, Type II Sulphuric Hot Water Seal — Clear	<b>43</b>	Electro Tin MIL-T-10727 C, Type I (Bright)
<b>13</b>	Anodize MIL-A-8625C, Type II Sulphuric Dichromate Seal — Yellow Green	<b>44</b>	Electro Tin (Solder) MIL-F-14072 M230/M222
<b>14</b>	Anodize MIL-A-8625C — Black	<b>48</b>	Copper / Nickel / Bright Tin
<b>21</b>	Iridite MIL-C-5541 — Clear	<b>50</b>	Black Oxide MIL-C-13924 — Steel
<b>22*</b>	Iridite MIL-C-5541 — Gold #14	<b>51</b>	Black Oxide MIL-F-495 — Brass
<b>31</b>	Cadmium QQ-P-416, CL 2 — Clear Chromate	<b>52</b>	Black Oxide MIL-C-13924 — Stainless Steel
<b>32</b>	Cadmium QQ-P-416, CL 2 — Color Chromate	<b>61</b>	Nickel QQ-N-290 CL 1, Type VI KC
		<b>63</b>	Ductile Nickel
		<b>66</b>	Electroless Nickel
		<b>91</b>	Silver QQ-S-365

\*Standard finishes: Zinc (Clear Chromate) on brass material, Iridite (Gold #14) on aluminum material.