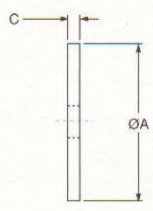
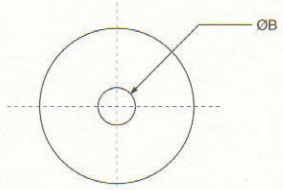


22000 MOUNT SERIES: SNUBBING WASHER & 22005

Performance Data & Dimensions

22000 MOUNT SERIES SNUBBING WASHER



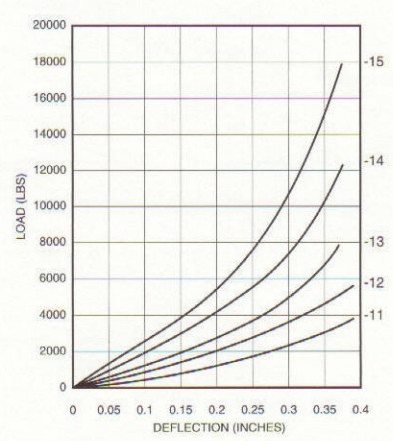
The use of snubbing washers is recommended to ensure proper static and dynamic loading of the isolator and retention of suspended equipment under severe shock environments.

Snubbing washers are ordered by separate part numbers as shown in the table below. The standard material is low-carbon steel and the standard finish is zinc plate. Other materials and finishes are available upon request.

| Size | "A" Dia. | "B" Dia. | "C" | Part # |
|-------|----------|----------|------|---------------|
| 22001 | 1.56 | .391 | .090 | 9810145-01804 |
| 22002 | 2.13 | .532 | .134 | 9810145-02804 |
| 22003 | 2.81 | .657 | .188 | 9810145-03804 |
| 22004 | 3.88 | .938 | .250 | 9810145-04804 |
| 22005 | 5.25 | 1.063 | .375 | 9810145-05804 |

22005 Series Axial Load vs. Deflection

Thin Center Mounting Structure



Thick Center Mounting Structure

