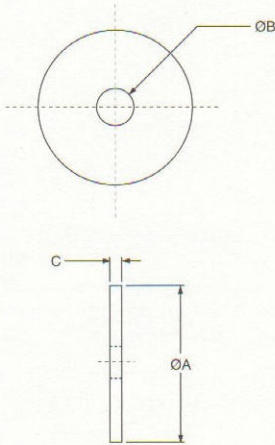


INDUSTRIAL CONICAL MOUNT SERIES: SNUBBING WASHERS

Dimensions & Selection Guide

INDUSTRIAL CONICAL MOUNT SERIES SNUBBING WASHER



The use of snubbing washers is recommended to ensure proper static and dynamic loading of the isolator and retention of suspended equipment under severe shock environments.

Snubbing washers are ordered by separate part numbers as shown in the below table. The standard material is low-carbon steel and the standard finish is zinc plate. Other materials and finishes are available upon request.

| Part Number | Head Washer Part Number | Part Dimensions (Inches) | | | Tail Washer Part Number | Part Dimensions (Inches) | | |
|-------------|-------------------------|--------------------------|------|-------|-------------------------|--------------------------|------|-------|
| | | A | B | C | | A | B | C |
| 27327 | 9810276-05804 | 2.25 | 0.52 | 0.125 | 9810276-05804 | 2.25 | 0.52 | 0.125 |
| 27328 | 9810276-05804 | 2.25 | 0.52 | 0.125 | 9810276-05804 | 2.25 | 0.52 | 0.125 |
| 26748 | 9810276-07804 | 2.50 | 0.64 | 0.125 | 9810276-06804 | 2.25 | 0.64 | 0.125 |
| 26749 | 9810276-12804 | 4.60 | 0.64 | 0.25 | 9810276-10804 | 3.50 | 0.64 | 0.19 |
| 27595 | 9810276-12804 | 4.60 | 0.64 | 0.25 | 9810276-10804 | 3.50 | 0.64 | 0.19 |