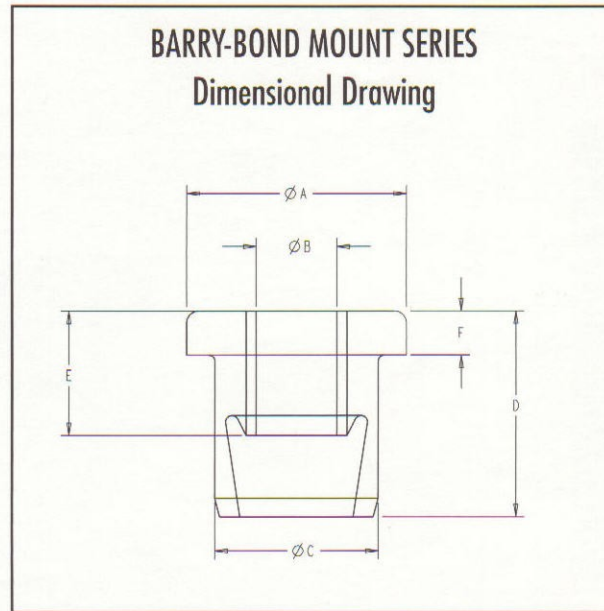


# BARRY-BOND MOUNT SERIES:

## Dimensions & Load Ranges



Part Number	Drawing Number	Maximum Axial Static Load Rating (lbs.)	Part Dimensions (inches)					
			A	B	C	D	E	F
BC-1120-1	27365	75 lbs.	1.09	0.40	0.81	1.02	0.62	0.22
BC-1120-3		125 lbs.	1.09	0.40	0.81	1.02	0.62	0.22
BC-1121-2	27366	250 lbs.	1.75	0.532	1.24	1.25	1.00	0.41
BC-1121-4		450 lbs.	1.75	0.532	1.24	1.25	1.00	0.41
BC-1122-2	27367	350 lbs.	2.00	0.532	1.35	1.62	1.31	0.53
BC-1122-4		600 lbs.	2.00	0.532	1.35	1.62	1.31	0.53
BC-1123-2	27368	500 lbs.	2.50	0.648	1.62	2.00	1.69	0.62
BC-1123-5		1,000 lbs.	2.50	0.648	1.62	2.00	1.69	0.62
BC-1124-2	27369	750 lbs.	2.98	0.648	1.98	2.22	2.00	0.81
BC-1124-5		1,400 lbs.	2.98	0.648	1.98	2.22	2.00	0.81
BC-1125-2	27370	1,400 lbs.	3.74	0.803	2.23	2.48	2.00	1.00
BC-1125-4		2,100 lbs.	3.74	0.803	2.23	2.48	2.00	1.00