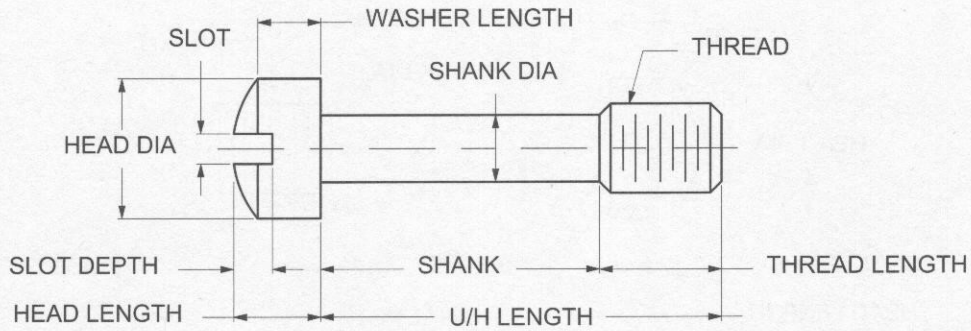


CAPTIVE PANEL SCREW TYPE 4



ORDERING CODE	XX MATERIAL	XXXX BASIC PART	XX FINISH
CODE	FINISH		
00	Plain — None		
01	Passivate MIL-F-14072-E300		
61	Nickel QQ-N-290 CL 1, Type VI KC		

MATERIAL	CODE
BRASS	BR
STAINLESS STEEL	SS
STEEL	ST

Additional Finishes Available

BASIC PART NUMBER	THREAD	HEAD DIA -0.005	HEAD LENGTH +0.000 -0.015	UNDER HEAD LENGTH -0.015	THREAD LENGTH -0.010	SHANK DIA -0.005	SHANK LENGTH -0.010	WASHER LENGTH +0.000 -0.010	SLOT WIDTH +0.000 -0.010	SLOT DEPTH +0.000 -0.015
3828	4-40	11/64	.107	15/16	3/16	.078	3/4	.079	.039	.048
3829	4-40	11/64	.107	1"	3/16	.078	13/16	.079	.039	.048
3830	6-32	7/32	.132	5/16	7/32	.095	3/32	.096	.048	.060
3831	6-32	7/32	.132	3/8	7/32	.095	5/32	.096	.048	.060
3832	6-32	7/32	.132	7/16	7/32	.095	7/32	.096	.048	.060
3833	6-32	7/32	.132	1/2	7/32	.095	9/32	.096	.048	.060
3834	6-32	7/32	.132	9/16	7/32	.095	11/32	.096	.048	.060
3835	6-32	7/32	.132	5/8	7/32	.095	13/32	.096	.048	.060
3836	6-32	7/32	.132	11/16	7/32	.095	15/32	.096	.048	.060
3837	6-32	7/32	.132	3/4	7/32	.095	17/32	.096	.048	.060
3838	6-32	7/32	.132	13/16	7/32	.095	19/32	.096	.048	.060
3839	6-32	7/32	.132	7/8	7/32	.095	21/32	.096	.048	.060
3840	6-32	7/32	.132	15/16	7/32	.095	23/32	.096	.048	.060
3841	6-32	7/32	.132	1"	7/32	.095	25/32	.096	.048	.060
3842	8-32	1/4	.156	5/16	7/32	.120	3/32	.113	.054	.071
3843	8-32	1/4	.156	3/8	7/32	.120	5/32	.113	.054	.071
3844	8-32	1/4	.156	7/16	7/32	.120	7/32	.113	.054	.071
3845	8-32	1/4	.156	1/2	7/32	.120	9/32	.113	.054	.071
3846	8-32	1/4	.156	9/16	7/32	.120	11/32	.113	.054	.071
3847	8-32	1/4	.156	5/8	7/32	.120	13/32	.113	.054	.071
3848	8-32	1/4	.156	11/16	7/32	.120	15/32	.113	.054	.071
3849	8-32	1/4	.156	3/4	7/32	.120	17/32	.113	.054	.071
3850	8-32	1/4	.156	13/16	7/32	.120	19/32	.113	.054	.071
3851	8-32	1/4	.156	7/8	7/32	.120	21/32	.113	.054	.071
3852	8-32	1/4	.156	15/16	7/32	.120	23/32	.113	.054	.071
3853	8-32	1/4	.156	1"	7/32	.120	25/32	.113	.054	.071
3854	8-32	1/4	.156	1-1/16	7/32	.120	27/32	.113	.054	.071
3855	8-32	1/4	.156	1-1/8	7/32	.120	29/32	.113	.054	.071

