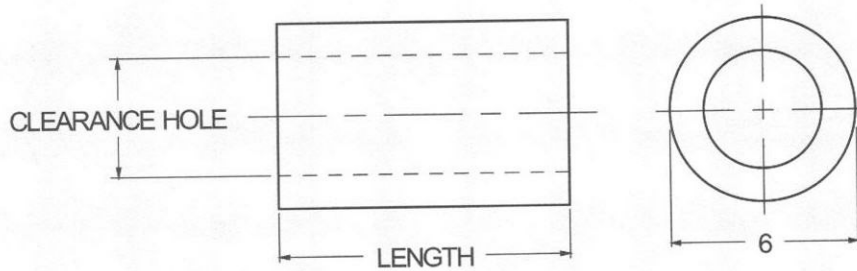




6mm ROUND SPACERS



| | | | | | |
|------------------|----------|----------------------|-------------------|----------------|--------|
| ORDERING CODE | XX | XXXX | XX | XXX | XX |
| | MATERIAL | BASIC PART NUMBER | CLEARANCE HOLE | LENGTH CODE | FINISH |

| MATERIAL | CODE |
|-----------------|------|
| ALUMINUM | AL |
| BRASS | BR |
| NYLON | NY |
| STAINLESS STEEL | SS |
| STEEL | ST |

NOTE: See Page B2 for additional materials and specifications.

| BASIC PART NO. |
|----------------|
| 5005 |

| CLEARANCE HOLE ±.13mm | CODE |
|--------------------------|------|
| 3.2 | 30 |
| 3.7 | 35 |
| 4.2 | 40 |

| LENGTH mm | CODE | LENGTH mm | CODE |
|--------------|------|--------------|------|
| 3 | 03.0 | 27 | 27.0 |
| 4 | 04.0 | 29 | 29.0 |
| 5 | 05.0 | 30 | 30.0 |
| 6 | 06.0 | 32 | 32.0 |
| 8 | 08.0 | 33 | 33.0 |
| 10 | 10.0 | 35 | 35.0 |
| 11 | 11.0 | 37 | 37.0 |
| 12 | 12.0 | 38 | 38.0 |
| 13 | 13.0 | 40 | 40.0 |
| 14 | 14.0 | 41 | 41.0 |
| 16 | 16.0 | 44 | 44.0 |
| 19 | 19.0 | 45 | 45.0 |
| 20 | 20.0 | 48 | 48.0 |
| 22 | 22.0 | 51 | 51.0 |
| 25 | 25.0 | | |

NOTE: For lengths not listed, contact Lyn-Tron, Inc.

| CODE | FINISH | CODE | FINISH |
|------|--|------|--|
| 00 | Plain — None | 33 | Black Zinc |
| 01 | Passivate MIL-F-14072-E300 | 34* | Zinc QQ-Z-325, Type II, CL 3 — Clear Chromate |
| 02 | Caustic Etch | 35 | Zinc QQ-Z-325, Type I, CL 3 |
| 03 | Bright Dip — Brass | 36 | Zinc QQ-Z-325, Type II, CL 3 — Yellow Chromate |
| 11 | Anodize MIL-A-8625C, Type I Chromic Hot Water Seal — Dark Grey | 42 | Electro Tin MIL-T-10727, Type I (Dull) |
| 12 | Anodize MIL-A-8625C, Type II Sulphuric Hot Water Seal — Clear | 43 | Electro Tin MIL-T-10727 C, Type I (Bright) |
| 13 | Anodize MIL-A-8625C, Type II Sulphuric Dichromate Seal — Yellow Green | 44 | Electro Tin (Solder) MIL-F-14072 M230/M222 |
| 14 | Anodize MIL-A-8625C — Black | 48 | Copper / Nickel / Bright Tin |
| 21 | Iridite MIL-C-5541 — Clear | 50 | Black Oxide MIL-C-13924 — Steel |
| 22* | Iridite MIL-C-5541 — Gold #14 | 51 | Black Oxide MIL-F-495 — Brass |
| 31 | Cadmium QQ-P-416, CL 2 — Clear Chromate | 52 | Black Oxide MIL-C-13924 — Stainless Steel |
| 32 | Cadmium QQ-P-416, CL 2 — Color Chromate | 61 | Nickel QQ-N-290 CL 1, Type VI KC |
| | | 63 | Ductile Nickel |
| | | 66 | Electroless Nickel |
| | | 91 | Silver QQ-S-365 |

*Standard finishes: Zinc (Clear Chromate) on brass material, Iridite (Gold #14) on aluminum material.