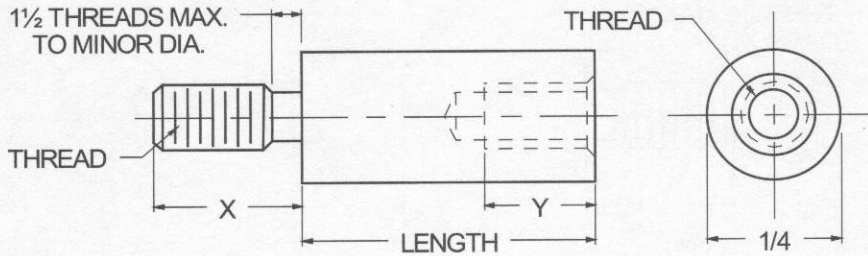




1/4 ROUND MALE-FEMALE STANDOFFS



ORDERING CODE	XX	XXXX	X.XXX	—	XX
	MATERIAL	BASIC PART NUMBER	LENGTH CODE		FINISH

MATERIAL	CODE
ALUMINUM	AL
BRASS	BR
STAINLESS STEEL	SS
STEEL	ST

NOTE: See Page A4 for additional materials and specifications.

THREAD SIZE	BASIC PART NO.
4-40	6880
6-32	6881
8-32	6882

NOTE: Variance in sizes between male and female threads are available.

LENGTH	CODE	LENGTH	CODE	LENGTH	CODE
1/4	0.250	1"	1.000	2"	2.000
5/16	0.312	1 1/16	1.062	2 1/8	2.125
3/8	0.375	1 1/8	1.125	2 1/4	2.250
7/16	0.437	1 3/16	1.187	2 3/8	2.375
1/2	0.500	1 1/4	1.250	2 1/2	2.500
9/16	0.562	1 5/16	1.312	2 5/8	2.625
5/8	0.625	1 3/8	1.375	2 3/4	2.750
11/16	0.687	1 7/16	1.437	2 7/8	2.875
3/4	0.750	1 1/2	1.500	3"	3.000
13/16	0.812	1 9/16	1.562	3 1/4	3.250
7/8	0.875	1 5/8	1.625	3 1/2	3.500
15/16	0.937	1 11/16	1.687	3 3/4	3.750
		1 3/4	1.750	4"	4.000
		1 13/16	1.812		
		1 7/8	1.875		
		1 15/16	1.937		

THREAD SIZE	"X" LENGTH	"Y" MIN. FULL THD. DEPTH	MIN. BODY LENGTH
4-40	3/16	1/4	3/8
6-32	1/4	3/8	1/2
8-32	3/8	7/16	9/16

NOTES:

1. In short body lengths "Y" will be tapped to maximum depth.
2. Threads longer or shorter than "X" length are available.

CODE	FINISH	CODE	FINISH
00	Plain — None	33	Black Zinc
01	Passivate MIL-F-14072-E300	34*	Zinc QQ-Z-325, Type II, CL 3 — Clear Chromate
02	Caustic Etch	35	Zinc QQ-Z-325, Type I, CL 3
03	Bright Dip — Brass	36	Zinc QQ-Z-325, Type II, CL 3 — Yellow Chromate
11	Anodize MIL-A-8625C, Type I	42	Electro Tin MIL-T-10727, Type I (Dull)
	Chromic Hot Water Seal — Dark Grey	43	Electro Tin MIL-T-10727 C, Type I (Bright)
12	Anodize MIL-A-8625C, Type II	44	Electro Tin (Solder) MIL-F-14072 M230/M222
	Sulphuric Hot Water Seal — Clear	48	Copper / Nickel / Bright Tin
13	Anodize MIL-A-8625C, Type II	50	Black Oxide MIL-C-13924 — Steel
	Sulphuric Dichromate Seal — Yellow Green	51	Black Oxide MIL-F-495 — Brass
14	Anodize MIL-A-8625C — Black	52	Black Oxide MIL-C-13924 — Stainless Steel
21	Iridite MIL-C-5541 — Clear	61	Nickel QQ-N-290 CL 1, Type VI KC
22*	Iridite MIL-C-5541 — Gold #14	63	Ductile Nickel
31	Cadmium QQ-P-416, CL 2 — Clear Chromate	66	Electroless Nickel
32	Cadmium QQ-P-416, CL 2 — Color Chromate	91	Silver QQ-S-365

*Standard finishes: Zinc (Clear Chromate) on brass material, Iridite (Gold #14) on aluminum material.