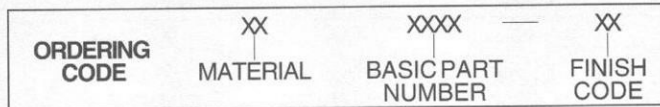
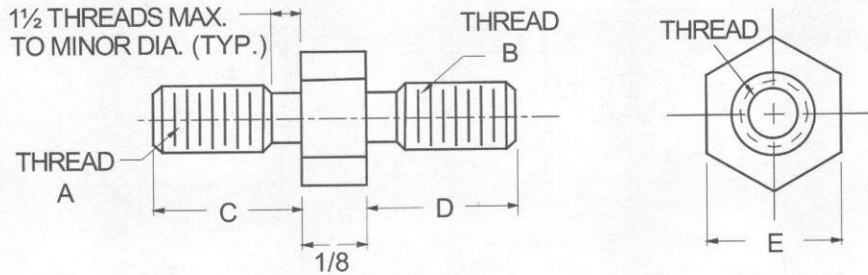




MALE-MALE HEX STANDOFFS



MATERIAL	CODE
ALUMINUM	AL
BRASS	BR
STEEL	ST

NOTE: See Page A4 for additional materials and specifications.

Basic Part Number	THREAD A	THREAD B	LENGTH C	LENGTH D	HEX E
6726	4-40	4-40	3/16	3/16	1/4
6727	4-40	6-32	3/16	1/4	1/4
6728	6-32	6-32	1/4	1/4	1/4
6729	6-32	8-32	1/4	3/8	1/4
6730	8-32	8-32	3/8	3/8	1/4
6731	8-32	10-32	3/8	3/8	1/4
6732	10-32	10-32	3/8	3/8	1/4
6733	8-32	8-32	3/8	3/8	5/16
6734	8-32	10-32	3/8	3/8	5/16
6735	10-32	10-32	3/8	3/8	5/16

CODE	FINISH	CODE	FINISH
00	Plain — None	33	Black Zinc
01	Passivate MIL-F-14072-E300	34*	Zinc QQ-Z-325, Type II, CL 3 — Clear Chromate
02	Caustic Etch	35	Zinc QQ-Z-325, Type I, CL 3
03	Bright Dip — Brass	36	Zinc QQ-Z-325, Type II, CL 3 — Yellow Chromate
11	Anodize MIL-A-8625C, Type I Chromic Hot Water Seal — Dark Grey	42	Electro Tin MIL-T-10727, Type I (Dull)
12	Anodize MIL-A-8625C, Type II Sulphuric Hot Water Seal — Clear	43	Electro Tin MIL-T-10727 C, Type I (Bright)
13	Anodize MIL-A-8625C, Type II Sulphuric Dichromate Seal — Yellow Green	44	Electro Tin (Solder) MIL-F-14072 M230/M222
14	Anodize MIL-A-8625C — Black	48	Copper / Nickel / Bright Tin
21	Iridite MIL-C-5541 — Clear	50	Black Oxide MIL-C-13924 — Steel
22*	Iridite MIL-C-5541 — Gold #14	51	Black Oxide MIL-F-495 — Brass
31	Cadmium QQ-P-416, CL 2 — Clear Chromate	52	Black Oxide MIL-C-13924 — Stainless Steel
32	Cadmium QQ-P-416, CL 2 — Color Chromate	63	Ductile Nickel
		66	Electroless Nickel
		91	Silver QQ-S-365

A89

*Standard finishes: Zinc (Clear Chromate) on brass material, Iridite (Gold #14) on aluminum material.