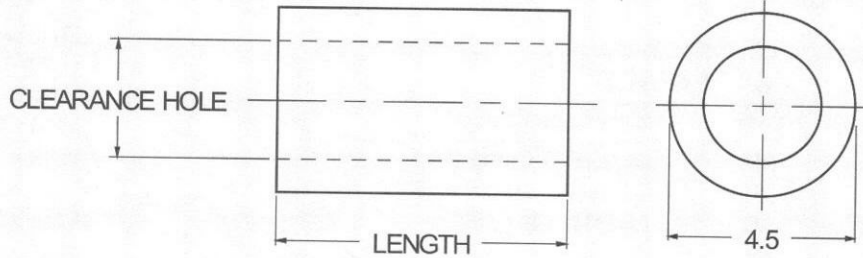




# 4.5mm ROUND SPACERS



<b>ORDERING CODE</b>	XX	XXXX	XX	XXX	XX
	MATERIAL	BASIC PART NUMBER	CLEARANCE HOLE	LENGTH CODE	FINISH

MATERIAL	CODE
BRASS	BR
ALUMINUM	AL
STAINLESS STEEL	SS
NYLON	NY

NOTE: See Page B2 for additional materials and specifications.

<b>BASIC PART NO.</b>
5003

CLEARANCEHOLE	CODE
±.13mm	
2.7	25
3.2	30

LENGTH mm	CODE
3	03.0
4	04.0
5	05.0
6	06.0
8	08.0
10	10.0
11	11.0
12	12.0
13	13.0
14	14.0
16	16.0
19	19.0
20	20.0
22	22.0
25	25.0

NOTE: For lengths not listed, contact Lyn-Tron, Inc.

CODE	FINISH	CODE	FINISH
00	Plain — None	33	Black Zinc
01	Passivate MIL-F-14072-E300	34*	Zinc QQ-Z-325, Type II, CL 3 — Clear Chromate
02	Caustic Etch	35	Zinc QQ-Z-325, Type I, CL 3
03	Bright Dip — Brass	36	Zinc QQ-Z-325, Type II, CL 3 — Yellow Chromate
11	Anodize MIL-A-8625C, Type I	42	Electro Tin MIL-T-10727, Type I (Dull)
	Chromic Hot Water Seal — Dark Grey	43	Electro Tin MIL-T-10727 C, Type I (Bright)
12	Anodize MIL-A-8625C, Type II	44	Electro Tin (Solder) MIL-F-14072 M230/M222
	Sulphuric Hot Water Seal — Clear	48	Copper / Nickel / Bright Tin
13	Anodize MIL-A-8625C, Type II	50	Black Oxide MIL-C-13924 — Steel
	Sulphuric Dichromate Seal — Yellow Green	51	Black Oxide MIL-F-495 — Brass
14	Anodize MIL-A-8625C — Black	52	Black Oxide MIL-C-13924 — Stainless Steel
21	Iridite MIL-C-5541 — Clear	61	Nickel QQ-N-290 CL 1, Type VI KC
22*	Iridite MIL-C-5541 — Gold #14	63	Ductile Nickel
31	Cadmium QQ-P-416, CL 2 — Clear Chromate	66	Electroless Nickel
32	Cadmium QQ-P-416, CL 2 — Color Chromate	91	Silver QQ-S-365

\*Standard finishes: Zinc (Clear Chromate) on brass material, Iridite (Gold #14) on aluminum material.