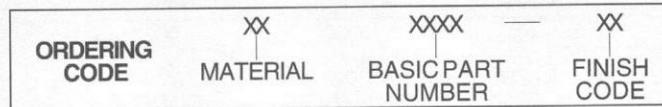
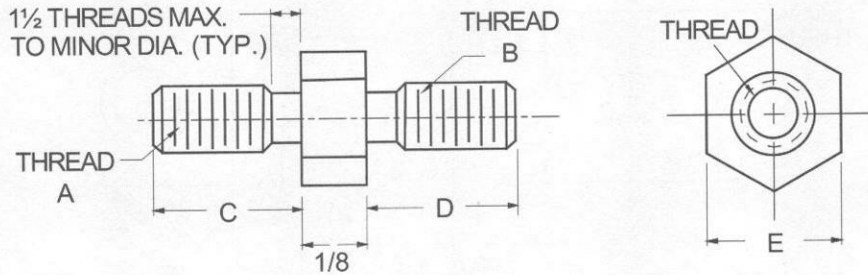




# MALE-MALE HEX STANDOFFS



| MATERIAL | CODE |
|----------|------|
| ALUMINUM | AL   |
| BRASS    | BR   |
| STEEL    | ST   |

NOTE: See Page A4 for additional materials and specifications.

| Basic Part Number | THREAD A | THREAD B | LENGTH C | LENGTH D | HEX E |
|-------------------|----------|----------|----------|----------|-------|
| 6726              | 4-40     | 4-40     | 3/16     | 3/16     | 1/4   |
| 6727              | 4-40     | 6-32     | 3/16     | 1/4      | 1/4   |
| 6728              | 6-32     | 6-32     | 1/4      | 1/4      | 1/4   |
| 6729              | 6-32     | 8-32     | 1/4      | 3/8      | 1/4   |
| 6730              | 8-32     | 8-32     | 3/8      | 3/8      | 1/4   |
| 6731              | 8-32     | 10-32    | 3/8      | 3/8      | 1/4   |
| 6732              | 10-32    | 10-32    | 3/8      | 3/8      | 1/4   |
| 6733              | 8-32     | 8-32     | 3/8      | 3/8      | 5/16  |
| 6734              | 8-32     | 10-32    | 3/8      | 3/8      | 5/16  |
| 6735              | 10-32    | 10-32    | 3/8      | 3/8      | 5/16  |

| CODE | FINISH   | CODE | FINISH   |
|------|--|------|--|
| 00   | Plain — None   | 33   | Black Zinc                                     |
| 01   | Passivate MIL-F-14072-E300   | 34*  | Zinc QQ-Z-325, Type II, CL 3 — Clear Chromate  |
| 02   | Caustic Etch   | 35   | Zinc QQ-Z-325, Type I, CL 3                    |
| 03   | Bright Dip — Brass   | 36   | Zinc QQ-Z-325, Type II, CL 3 — Yellow Chromate |
| 11   | Anodize MIL-A-8625C, Type I<br>Chromic Hot Water Seal — Dark Grey        | 42   | Electro Tin MIL-T-10727, Type I (Dull)         |
| 12   | Anodize MIL-A-8625C, Type II<br>Sulphuric Hot Water Seal — Clear         | 43   | Electro Tin MIL-T-10727 C, Type I (Bright)     |
| 13   | Anodize MIL-A-8625C, Type II<br>Sulphuric Dichromate Seal — Yellow Green | 44   | Electro Tin (Solder) MIL-F-14072 M230/M222     |
| 14   | Anodize MIL-A-8625C — Black  | 48   | Copper / Nickel / Bright Tin                   |
| 21   | Iridite MIL-C-5541 — Clear   | 50   | Black Oxide MIL-C-13924 — Steel                |
| 22*  | Iridite MIL-C-5541 — Gold #14  | 51   | Black Oxide MIL-F-495 — Brass                  |
| 31   | Cadmium QQ-P-416, CL 2 — Clear Chromate                                  | 52   | Black Oxide MIL-C-13924 — Stainless Steel      |
| 32   | Cadmium QQ-P-416, CL 2 — Color Chromate                                  | 63   | Ductile Nickel                                 |
|      |  | 66   | Electroless Nickel                             |
|      |  | 91   | Silver QQ-S-365                                |

A89

\*Standard finishes: Zinc (Clear Chromate) on brass material, Iridite (Gold #14) on aluminum material.