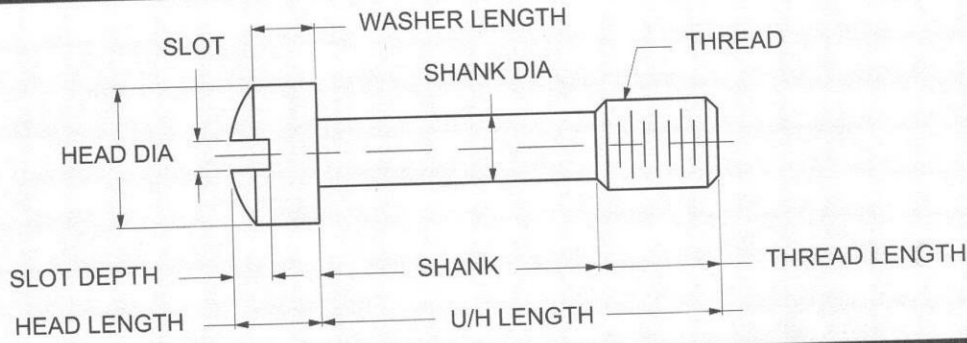


CAPTIVE PANEL SCREW TYPE 4



ORDERING CODE	XX MATERIAL	XXXX BASIC PART	XX FINISH
CODE	FINISH		
00	Plain — None		
01	Passivate MIL-F-14072-E300		
61	Nickel QQ-N-290 CL 1, Type VI KC		

MATERIAL	CODE
BRASS	BR
STAINLESS STEEL	SS
STEEL	ST

Additional Finishes Available

BASIC PART NUMBER	THREAD	HEAD DIA -0.005	HEAD LENGTH +0.000 -0.015	UNDER HEAD LENGTH -0.015	THREAD LENGTH -0.010	SHANK DIA -0.005	SHANK LENGTH -0.010	WASHER LENGTH +0.000 -0.010	SLOT WIDTH +0.000 -0.010	SLOT DEPTH +0.000 -0.015
3799	2-56	1/8	.083	1/4	5/32	.061	3/32	.062	.031	.037
3800	2-56	1/8	.083	5/16	5/32	.061	5/32	.062	.031	.037
3801	2-56	1/8	.083	3/8	5/32	.061	7/32	.062	.031	.037
3802	2-56	1/8	.083	7/16	5/32	.061	9/32	.062	.031	.037
3803	2-56	1/8	.083	1/2	5/32	.061	11/32	.062	.031	.037
3804	2-56	1/8	.083	9/16	5/32	.061	13/32	.062	.031	.037
3805	2-56	1/8	.083	5/8	5/32	.061	15/32	.062	.031	.037
3806	2-56	1/8	.083	11/16	5/32	.061	17/32	.062	.031	.037
3807	2-56	1/8	.083	3/4	5/32	.061	19/32	.062	.031	.037
3808	3-48	5/32	.095	1/4	5/32	.070	3/32	.070	.035	.043
3809	3-48	5/32	.095	5/16	5/32	.070	5/32	.070	.035	.043
3810	3-48	5/32	.095	3/8	5/32	.070	7/32	.070	.035	.043
3811	3-48	5/32	.095	7/16	5/32	.070	9/32	.070	.035	.043
3812	3-48	5/32	.095	1/2	5/32	.070	11/32	.070	.035	.043
3813	3-48	5/32	.095	9/16	5/32	.070	13/32	.070	.035	.043
3814	3-48	5/32	.095	5/8	5/32	.070	15/32	.070	.035	.043
3815	3-48	5/32	.095	11/16	5/32	.070	17/32	.070	.035	.043
3816	3-48	5/32	.095	3/4	5/32	.070	19/32	.070	.035	.043
3817	4-40	11/64	.107	1/4	3/16	.078	1/16	.079	.039	.048
3818	4-40	11/64	.107	5/16	3/16	.078	1/8	.079	.039	.048
3819	4-40	11/64	.107	3/8	3/16	.078	3/16	.079	.039	.048
3820	4-40	11/64	.107	7/16	3/16	.078	1/4	.079	.039	.048
3821	4-40	11/64	.107	1/2	3/16	.078	5/16	.079	.039	.048
3822	4-40	11/64	.107	9/16	3/16	.078	3/8	.079	.039	.048
3823	4-40	11/64	.107	5/8	3/16	.078	7/16	.079	.039	.048
3824	4-40	11/64	.107	11/16	3/16	.078	1/2	.079	.039	.048
3825	4-40	11/64	.107	3/4	3/16	.078	9/16	.079	.039	.048
3826	4-40	11/64	.107	13/16	3/16	.078	5/8	.079	.039	.048
3827	4-40	11/64	.107	7/8	3/16	.078	11/16	.079	.039	.048



F26