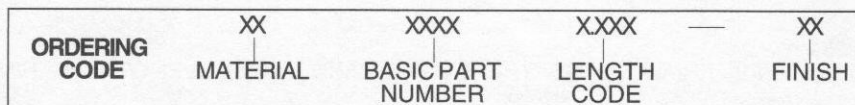
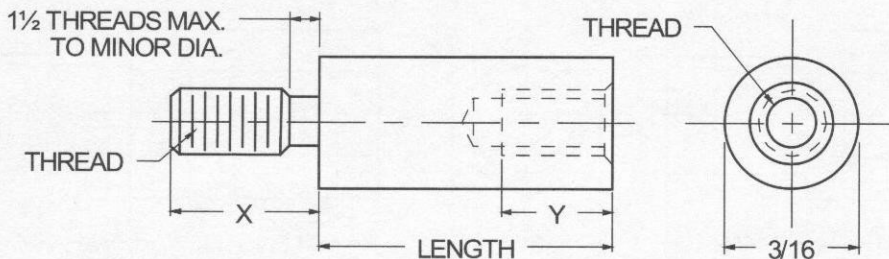




3/16 ROUND MALE-FEMALE STANDOFFS



| MATERIAL | CODE |
|-----------------|------|
| ALUMINUM | AL |
| BRASS | BR |
| STAINLESS STEEL | SS |
| STEEL | ST |

NOTE: See Page A4 for additional materials and specifications.

| THREAD SIZE | BASIC PART NO. |
|-------------|----------------|
| 2-56 | 6878 |
| 4-40 | 6879 |
| 6-32 | 6877 |

NOTE: Variance in sizes between male and female threads are available.

| THREAD SIZE | "X" LENGTH | "Y" MIN. FULL THD. DEPTH | MIN. BODY LENGTH |
|-------------|------------|--------------------------|------------------|
| 2-56 | 5/32 | 3/16 | 5/16 |
| 4-40 | 3/16 | 1/4 | 3/8 |
| 6-32 | 1/4 | 3/8 | 1/2 |

| LENGTH | CODE | LENGTH | CODE |
|--------|-------|---------|-------|
| 3/16 | 0.187 | 1" | 1.000 |
| 1/4 | 0.250 | 1 1/16 | 1.062 |
| 5/16 | 0.312 | 1 1/8 | 1.125 |
| 3/8 | 0.375 | 1 3/16 | 1.187 |
| 7/16 | 0.437 | 1 1/4 | 1.250 |
| 1/2 | 0.500 | 1 5/16 | 1.312 |
| 9/16 | 0.562 | 1 3/8 | 1.375 |
| 5/8 | 0.625 | 1 7/16 | 1.437 |
| 11/16 | 0.687 | 1 1/2 | 1.500 |
| 3/4 | 0.750 | 1 9/16 | 1.562 |
| 13/16 | 0.812 | 1 5/8 | 1.625 |
| 7/8 | 0.875 | 1 11/16 | 1.687 |
| 15/16 | 0.937 | 1 3/4 | 1.750 |
| | | 1 13/16 | 1.812 |
| | | 1 7/8 | 1.875 |
| | | 1 15/16 | 1.937 |
| | | 2" | 2.000 |

NOTES:

- In short body lengths "Y" will be tapped to maximum depth.
- Threads longer or shorter than "X" length are available.

| CODE | FINISH | CODE | FINISH |
|------|--|------|--|
| 00 | Plain — None | 33 | Black Zinc |
| 01 | Passivate MIL-F-14072-E300 | 34* | Zinc QQ-Z-325, Type II, CL 3 — Clear Chromate |
| 02 | Caustic Etch | 35 | Zinc QQ-Z-325, Type I, CL 3 |
| 03 | Bright Dip — Brass | 36 | Zinc QQ-Z-325, Type II, CL 3 — Yellow Chromate |
| 11 | Anodize MIL-A-8625C, Type I Chromic Hot Water Seal — Dark Grey | 42 | Electro Tin MIL-T-10727, Type I (Dull) |
| 12 | Anodize MIL-A-8625C, Type II Sulphuric Hot Water Seal — Clear | 43 | Electro Tin MIL-T-10727 C, Type I (Bright) |
| 13 | Anodize MIL-A-8625C, Type II Sulphuric Dichromate Seal — Yellow Green | 44 | Electro Tin (Solder) MIL-F-14072 M230/M222 |
| 14 | Anodize MIL-A-8625C — Black | 48 | Copper / Nickel / Bright Tin |
| 21 | Iridite MIL-C-5541 — Clear | 50 | Black Oxide MIL-C-13924 — Steel |
| 22* | Iridite MIL-C-5541 — Gold #14 | 51 | Black Oxide MIL-F-495 — Brass |
| 31 | Cadmium QQ-P-416, CL 2 — Clear Chromate | 52 | Black Oxide MIL-C-13924 — Stainless Steel |
| 32 | Cadmium QQ-P-416, CL 2 — Color Chromate | 61 | Nickel QQ-N-290 CL 1, Type VI KC |
| | | 63 | Ductile Nickel |
| | | 66 | Electroless Nickel |
| | | 91 | Silver QQ-S-365 |

*Standard finishes: Zinc (Clear Chromate) on brass material, Iridite (Gold #14) on aluminum material.